

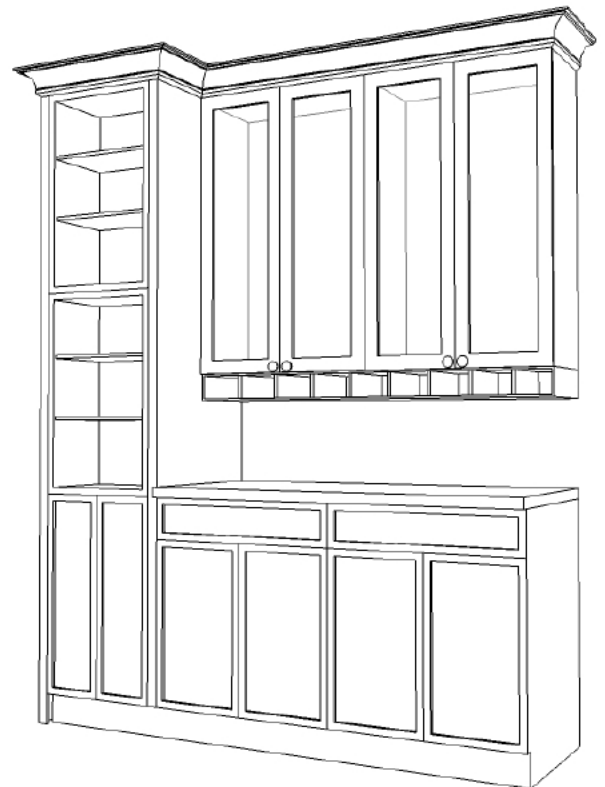
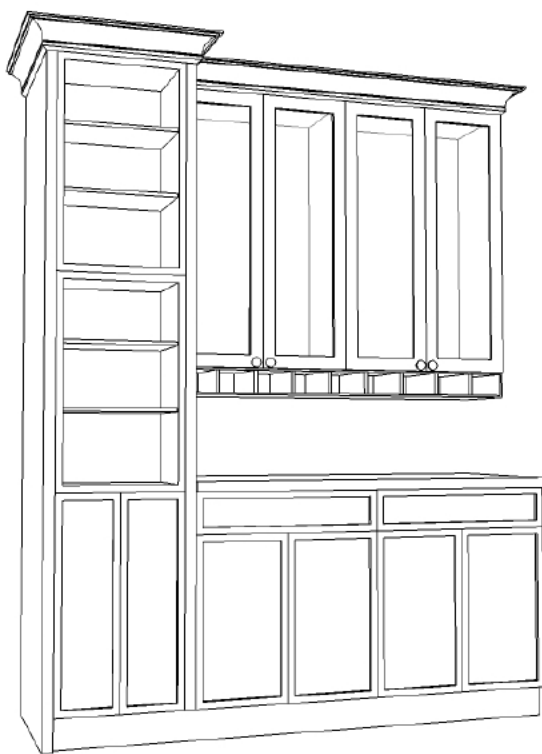
WINE RACK WITH STORAGE TOWER

This is a good combination of open shelving, storage space, and display area. Perfect for a wet bar area, entertainment room, or wine bar. We used a combination of cabinets to recreate the look, with the only real carpentry coming from the cubby holes.



Supplies You Will Need from the RTA Cabinet Store

- ✓ Two 9" full height base cabinets
- ✓ Two 27" base cabinets
- ✓ Two 18" wide x 30" high wall cabinets
- ✓ Two 96" refrigerator panels
- ✓ Two 27" wide x 42" high wall cabinets
- ✓ Two 84" refrigerator panel
- ✓ One 7' piece of scribe molding
- ✓ One 8' piece of toe



Instructions to Build a Wine Rack with Storage Tower

Step 1: Install the two 27" wide x 42" high wall cabinets, securing them to the wall.

Step 2: Install the two 27" wide base cabinets.

Step 3: Secure one of the refrigerator panels to the side of the wall cabinets and base cabinets. For the front trim piece, you have the option of using the trim piece which came with the refrigerator panel (which adds 1.5") or you can just take a piece of scribe molding and attach it to the front edge to cover up the exposed plywood edging.

Step 4: Install the two 9" full height base cabinets.

Step 5: Using the 2 x 4's, build a frame for behind the wall cabinets that is 12" deep, 60" high, and 18" wide. This will be secured to the wall and used to support the wall cabinets that will be going in.

Step 6: Install the two 18" wide x 30" high wall cabinets, securing them at the face frame to each other, the refrigerator panel, and the framing behind it.

Step 7: Secure the other refrigerator panel in place, attaching it the face frame of the cabinets.

Step 8: Using the 84" refrigerator panels, cut them to 54" in length to use as the bottom and top of the cubby holes. Using the remaining 30" of panel on each one, cut the vertical pieces for the cubby holes. The size of them is up to you, but we recommend a minimum of 5" cubby holes.

Step 9: Secure the two 54" pieces of panel to each of the vertical pieces using either wood screws or nails (be sure to drill pilot holes if using screws). Secure the whole thing to the bottom of the 27" wall cabinets.

Step 10: Using the scribe molding, cut strips to cover up the exposed plywood edge of the new cubby holes.

Step 11: Using the toe kick, cover up the bottom of the cabinets to create a seamless toe kick.

Step 12: For the open shelf look, remove the doors on the tower and touch up the holes.

My Design Notes