

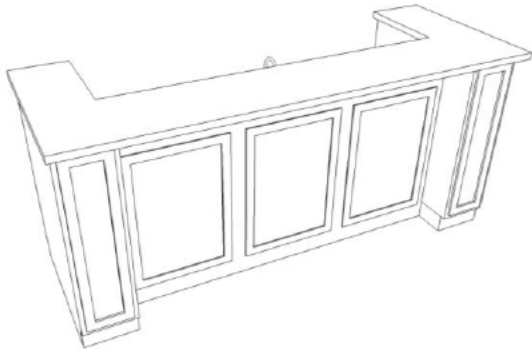
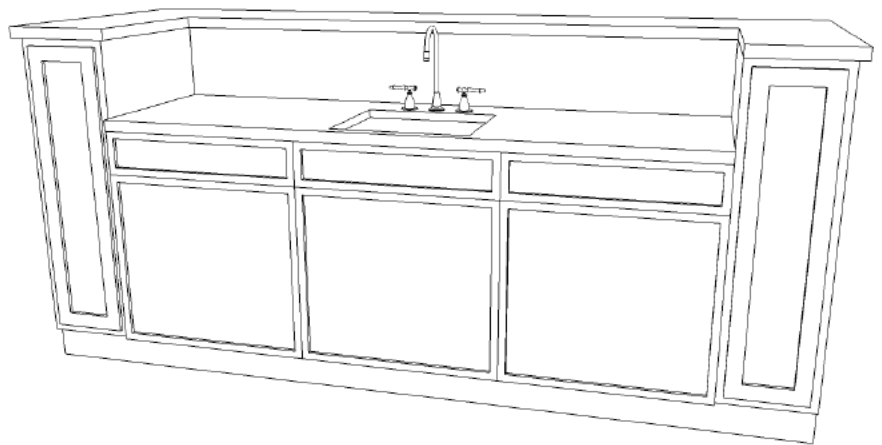
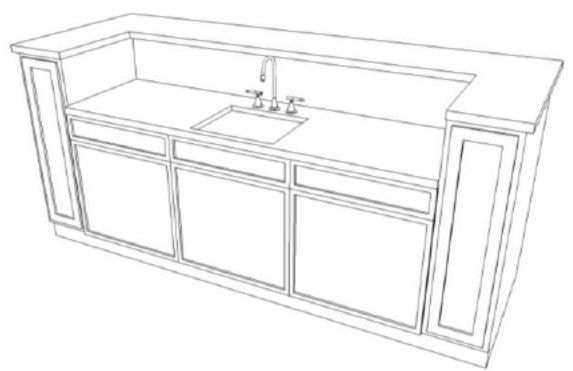


KITCHEN ISLAND & BREAKFAST BAR

Similar to another design that we showed you, this kitchen island has plenty of room for storage with cabinets on both ends that can be used as bookshelves by removing the doors, or regular storage. The big difference with this design is the additional height of the breakfast bar. By using 42" high wall cabinets, you create an elevated eating area, and add some depth/dimension to the design. The island can be as wide as you want it to be, but we designed it for seven feet. While they don't show the other side in the picture, we are leaving the backsplash up to your imagination (we only factored in an island panel to cover it). We also including optional decorative end panels for the back of the island, which you don't need for the design but add some detailing.

Supplies You Will Need from the RTA Cabinet Store

- ✓ One 36" wide sink base
- ✓ Two 12" wide base cabinets
- ✓ Four 42" wall end panels
- ✓ Two 36" wide by 42" high wall cabinets
- ✓ (Optional) Twelve 42" high decorative wall end panels
- ✓ Three 8' pieces of toe kick (assuming the toe kick is 5/8" thick. This may vary by cabinet style)
- ✓ Six 3 x 4 island panels
- ✓ 2 x 4's from your local supply store
- ✓ Pint of stain (for any touch up)



www.rtacabinetstore.com

P. 610-337-5934 F. 484-231-8726

Instructions to Build a Kitchen Island & Breakfast Bar

- Step 1: Install the sink base and two base cabinets, securing the face frames together and anchoring them to the floor.
- Step 2: Using 2 x 4's, build a frame that is 46 ½" high, 48" wide, and the depth of a 2x4 on its side (you are building a wall for behind the base cabinets). Once built, secure the frame to the floor and the back of the base cabinets.
- Step 3: Build two more frames, both the same size, measuring 42" wide x 11 3/8" deep x 4.5" high. One will be placed at each end of the island, with 18" extending past the back of the base cabinets. Secure these frames to both the floor and the cabinets.
- Step 4: Using three of the island panels, cut them to fit the back of the 42" wide x 42" high wall cabinets. So that the seams are not visible, it is best to cut the two pieces for the back of the wall cabinets at 26" wide and 16" wide. Once cut, secure them to the back of the wall cabinets.
- Step 5: Take the 42" high wall end panels and secure them to the four sides of the wall cabinets.
- Step 6: Set the wall cabinets on top of the framing and secure them to both the sides of the base cabinets and the framing.
- Step 7: Using two more of the island panels, cut them to size and cover the back side of the framing that is still exposed (running along the back of the island, between the two wall cabinets).
- Step 8: Take another island panel and cut two pieces, to cover up the exposed framing on the front side above the base cabinets.
- Step 9: Using the toe kick, cover the bottom of the cabinets and the framing. Make sure you use mitered cuts on the corners to give it a professionally finished look.
- Step 10: Optional: It really give the island a finished, custom look, attach decorative wall end panels. These would go on the ends of each wall cabinet, and also line the back side of the island. You should be able to even space out six of them on the back of the island, and then use the remaining two to cover the inside panel where the back of the wall cabinets would be.

My Design Notes